

# FUZION

where beauty meets technology

## Product Knowledge

### CLEANZER ~ NAIL PREP

Alcohol alone will not remove all the reactants in gel dispersion layers!

- Removes debris and oils from the nail plate.
- Alcohol alone will not remove all the reactants in gel dispersion layers, Fuzion Cleanzer will.
- Cleans all surfaces, brushes, jars etc of excess gel.
- Available in watermelon scent or unscented
- 1L & 250ml sizing



### DEHYDRATE ~ NAIL PREP

Designed to dehydrate and prepare the nail for advanced cuticle prep and gel application.

- Can be helpful for clients with oily nail beds to prevent lifting.
- Available in 250ml & 1L sizing



### PRIMER ~ ACID-BASED PRIMER

- Fuzion Primer is designed to dehydrate the natural nail before applying your chosen Fuzion Bonder.
- Prep and cleanse the nail, apply Fuzion Primer sparingly to natural nail only.
- Allow to air dry to a chalky finish.



## GRIPZION ~ BONDER

Bonding Agent

- One full coat from cuticle to free edge. Can be used on the natural nail and prepped gel product.
- Cure for 2 minutes UV, 30 seconds LED.
- Recommended for use with more flexible gels such as “Five” or SL Clear



## COHEZION ~ BONDER

Alternate Bonding Agent (air dry)

- One to four full coat(s) from cuticle to free edge. Can be used on the natural nail and prepped gel product.
- Can be used around cuticle area (on natural nail still exposed) before “Extreme Shine” application.
- Recommended for use with more rigid gels such as “2.5” or Repairz
- Air dry with no curing required.



## PROBLEM CHILD ~ BONDER

Alternate Bonding Agent for Clients that Lift

- Designed as a troubleshooter for clients where “Gripzion” or “Cohezion” are not working.
- Apply a thin layer, scrubbing it into the nail plate.
- DO NOT OVER APPLY!
- This is the last resort for lifting. Try the above methods before using Problem Child
- Cure for 2 minutes UV, 60 seconds LED.



## CLEAR BASE ~ BASE GEL

- Apply with surface tension to the nail after your chosen bonder.
- Crystal clear tone for clients who do not need pink enhancement of the nail bed.
- For French application, wipe excess gel from free edge where white is to be applied.
- Cure for 2 minutes UV, 30 seconds LED.



## PINK BASE ~ BASE GEL

- Apply with surface tension to the nail after your chosen bonder.
- Creamy pink tone for clients who require additional pink enhancement of the nail bed.
- For French application, wipe excess gel from free edge where white is to be applied.
- Cure for 2 minutes UV, 30 seconds LED.



## 2.5 ~ BUILDER GEL

- A self leveling thin viscosity gel.
- Designed as a less flexible alternative to “Five” and “SL Clear”.
- When using “2.5” it is not recommended to layer with other building gels such as “Five”, “SL Clear” as the difference in flexibility may cause pocketing or breakage.
- Can be used as a one step with “Cohezion”.
- Cure for 2 minutes UV, 60 seconds LED.



## SL CLEAR ~ BUILDER GEL

- Medium self leveling building and blending gel.
- Apply in two layers for new nails, one layer for basic fills.
- Apply on 2-3 nails at once and then freeze cure into place.
- Very flexible and durable, can be layered with “Five” or “Sculptzure”.
- Not recommended to use with more rigid gels such as “2.5”.
- Cure for 2 minutes UV, 60 seconds LED.



## SCULPTZURE ~ BUILDER GEL / EXTENSION GEL

- Non self leveling building gel.
- Use for mixing custom glitters.
- Can be used to build up stress area on concave nails.
- Very durable, can be layered with “Five” or “SL Clear”.
- Not recommended to use on the body of the nail with more rigid gel such as “2.5”.
- Cure for 2 minutes UV, 60 seconds LED.



## FIVE ~ BUILDER GEL

- Slow self leveling building and blending gel.
- Apply in two layers for new nails, one layer for basic fills.
- Using a floating pressure and parallel brush. Be on your five, not in it.
- Apply all 5 nails at once to allow the gel to dome up and create the perfect nail.
- Very flexible and durable, can be layered with “SL Clear” or “Sculptzure”.
- Not recommended to use with more rigid gels. ie. “2.5”
- Cure for 2 minutes UV, 60 seconds LED.



## “5” UNDER COVER ~ BUILDER GEL

- Everything you LOVE about “Five”, with the beautiful colour of “Repairz”!
- Cure for 2 minutes UV, 60 seconds LED.



## COVER ME ~ *BASE GEL*

- Can be used as a base gel, builder gel or full coverage for nail bed extension.
- Highly pigmented opaque gel - medium viscosity.
- Cure for 2 minutes UV, 60 seconds LED.



## REPAIRZ ~ *BUILDER GEL*

- A medium viscosity fiber gel with a warm pink tone.
- Designed to cover bruising and damage.
- Rigid Formula - optimum for building extreme extensions.
- Not recommended to use on the body of the nail with more flexible gels such as "Five"
- Cure for 2 minutes UV, 60 seconds LED.



## BLUSH ~ *BUILDER GEL*

- A milky pink, self leveling builder gel.
- The soft pink shade can be used on its own, or paired with Ivory for a flawless and easy to achieve Baby Boomer effect.
- Cure for 2 minutes UV, 60 seconds LED.



## NUDE ~ *EXTENSION GEL*

- Natural tone for clients who prefer a natural look.
- Used to create foundation layer for new nails.
- Cure for 2 minutes UV, 60 seconds LED.



## IVORY ~ *BUILDER GEL*

- A milky white, self-leveling builder gel.
- This off white tone can be used as a base on its own or paired with Blush for a flawless and easy to achieve baby boomer effect.
- Cure for 2 minutes UV, 60 seconds LED.



## SL WHITE ~ EXTENSION GEL

- Strong bright white, self leveling building gel.
- Apply in one even thin layer for fills, and with foundation layer for new nails
- Cure for 2 minutes UV, 60 seconds LED.



## WISH ~ EXTENSION GEL

- Newly reformulated Fuzion 'Wish' is designed to be used as a medium viscosity soft white extension gel.
- Perfect for 'Baby Boomer' designs or for clients who like a softer look.
- Cure for 2 minutes UV, 60 seconds LED.



## EXTREME SHINE ~ TOP COAT

- High shine top gloss.
- Apply in one coat evenly over the entire nail, capping the free edge.
- Do not over buff prior to application, as 2 smooth surfaces will not bond well.
- Check for 'dust bunnies' and texture prior to curing.
- Cure 2 minutes UV, 60 seconds LED.
- Recommend using UV only formula for French tips and light colours to avoid the possible yellowing of the UV/LED formula.



## TACK FREE TOPCOAT ~ TOP COAT

- High Shine topcoat that cures with no dispersion layer.
- Designed to work with chrome powders and pigments.
- Due to the nature of Tack Free, it works best with darker colors as it can be prone to yellowing.
- Cure 2 minutes UV, 60 seconds LED.



## MATTE TOPCOAT ~ TOP COAT

- Matte finish topcoat with no dispersion layer.
- Cure 2 minutes UV, 60 seconds LED.



## ON TOP GLOSS ~ TOP COAT

- On Top Gloss is the finishing touch with a high shine.
- Add a thin, even coat and then wipe off the dispersion layer.
- Cure 60 seconds LED, 2 minutes UV.



## FINISH ~ FINISHING TOUCHES

- New Fuzion "Finish" Cleaner gets your nails ready for a photo finish!
- Brings nails to a high shine to complete your service.
- Apply Fuzion Finish to lint free wipe and vigorously wipe all 10 nails for maximum shine.
- Air Dry, so no extra curing!



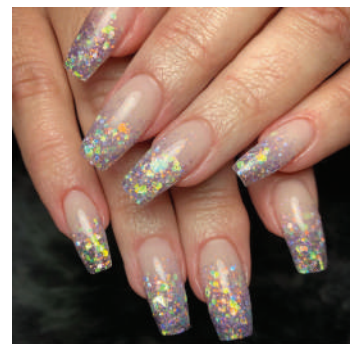
## CUTICLE OIL ~ FINISHING TOUCHES

- Nut free.
- Conditions cuticles and skin.
- Comes in a selection of fabulous fragrances.
- Apply Fuzion cuticle oil to lint free wipe and vigorously wipe all 10 nails for maximum shine.
- Great retail item for clients.
- Available in 30ml, & 250ml sizes.
- Available in Juicy Pomegranate & Tropical Fuzion



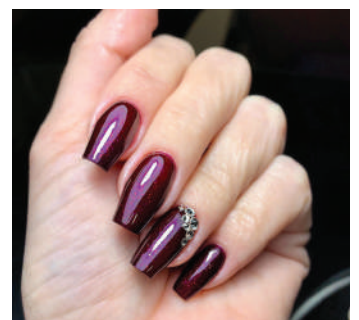
## SPARKLEZ ~ COLOUR GEL

- Our Signature Formula has the perfect viscosity to embed or apply on top.
- New Sparklez are released seasonally & generally are themed and paired with new Colourz!
- Sparklez come in a variety of different colours, glitters & finishes
- Cure 60s LED / 120s UV



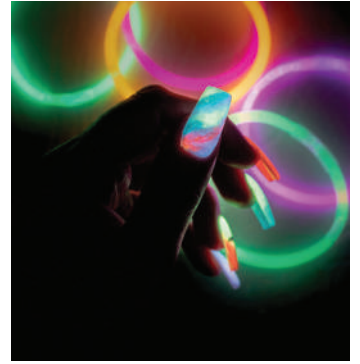
## COLOURZ ~ COLOUR GEL

- Our Signature Formula has the perfect viscosity to embed or apply on top.
- New Colourz are released seasonally & generally are themed and paired with new Sparklez.
- Colourz come in a variety of different colours & finishes.
- Cure 60s LED / 120s UV



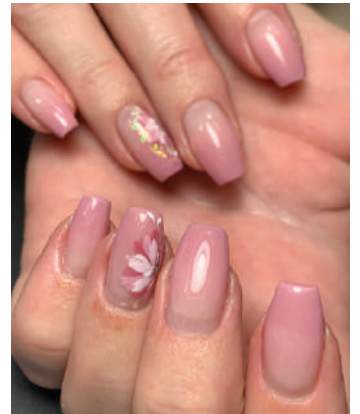
## GLOWZ ~ GLOW IN THE DARK COLOUR GEL

- Our Signature Formula has the perfect viscosity to embed or apply on top.
- Glowz are released annually, generally around summer time.
- Glowz, as the name implies, glow in the dark and recharge by exposing the finished product to UV rays.
- Cure 60s LED / 120s UV



## PAINTZ ~ NAIL ART & HANDPAINTING

- Our Paintz line is specifically designed for the artists among us who wish to create hand painted designs in a variety of colours and finishes.
- Paintz are highly pigmented to help pronounce your design.
- Paintz can also be used in full colour, with one coat coverage!
- No dispersion layer.
- Requires 120s Cure in UV/LED or UV Only Lamp.



**FUZION**  
*where beauty meets technology*